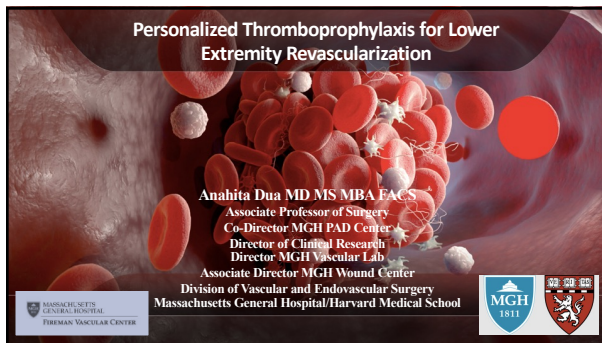


Personalized Thromboprophylaxis for Lower Extremity Revascularization

Anahita Dua MD MS MBA FACS
 Associate Professor of Surgery
 Co-Director MGH PAD Center
 Director of Clinical Research
 Director MGH Vascular Lab
 Associate Director MGH Wound Center
 Division of Vascular and Endovascular Surgery
 Massachusetts General Hospital/Harvard Medical School

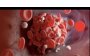


MASSACHUSETTS GENERAL HOSPITAL THROMBOSIS VASCULAR CENTER

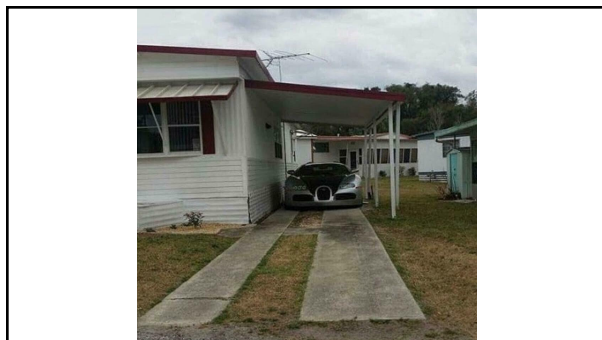
MGH 1811

Disclosures

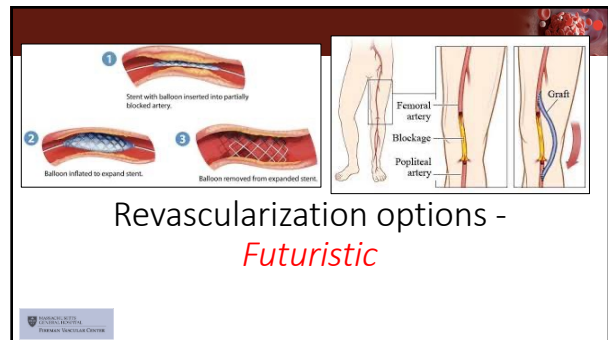
- NIH R21AG077310 Federal Award



MASSACHUSETTS GENERAL HOSPITAL THROMBOSIS VASCULAR CENTER



Revascularization options - Futuristic




MASSACHUSETTS GENERAL HOSPITAL THROMBOSIS VASCULAR CENTER

Following Revascularization...

- Major adverse cardiovascular events:
 - MI - CLOT
 - Ischemic stroke - CLOT
- Major adverse limb events
 - Acute limb ischemia - CLOT
 - Amputation - CLOT

→ These rates increase with graft/stent thrombosis




MASSACHUSETTS GENERAL HOSPITAL THROMBOSIS VASCULAR CENTER

Chewin et al. Vasc Med. 2009; 14(1):162-74

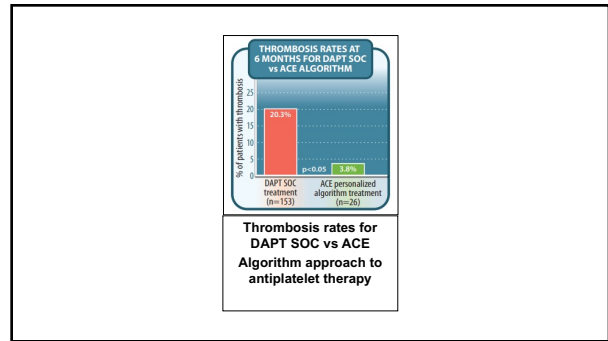
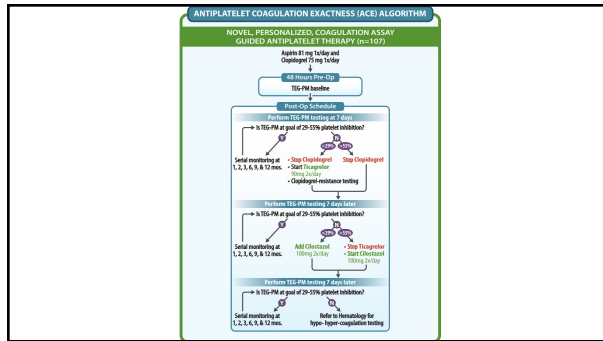
“One-Size Fits All” Is **Not** Working

- No level 1A data supporting use of specific antithrombotic regimen
- Hypercoagulability can be transient
- Antiplatelet treatment resistance → therapeutic failure

Thus development of an **individualized and subject-specific** approach is necessary



MASSACHUSETTS GENERAL HOSPITAL THROMBOSIS VASCULAR CENTER



ANNALS OF SURGERY

Articles & Issues | Infographics | For Authors | Journal Info

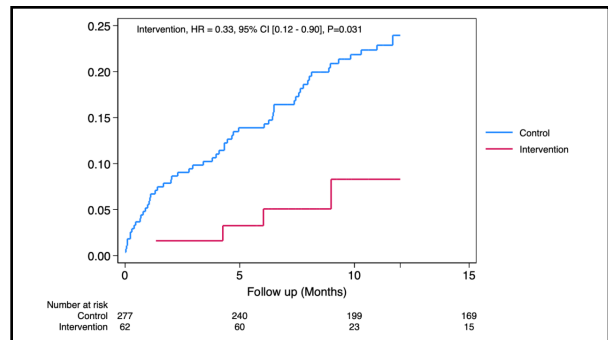
ASA PAPER

The Impact of Sex on Antiplatelet and Anticoagulant Thromboprophylaxis in Patients with Peripheral Artery Disease Post-revascularization

Suarez, Sasha MD¹; Agrawal, Aniket MD²; Patel, Shiv BA³; Grobman, Benjamin BA⁴; Ghahdoui, Samir MD⁵; Morena, Leea MD⁶; Rodriguez, Adriana MD⁷; Machius, Kelle MD⁸; Roy, Trisha MD, PhD⁹; Eagleton, Matthew MD¹⁰; Dua, Anahita MD, MBA, MSc¹¹

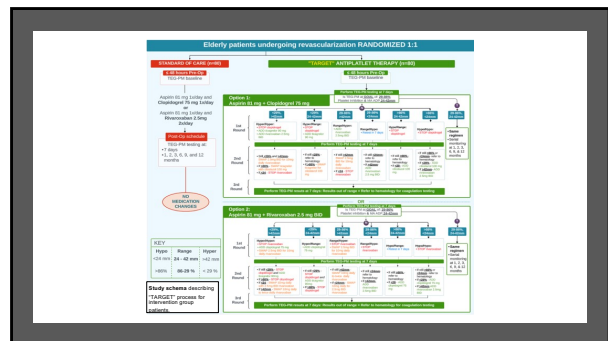
Author Information @

Annals of Surgery (1:10.1097/SLA.00000000000006375, June 11, 2024. | DOI: 10.1097/SLA.00000000000006375



What you need to pull it off – Outpatient!

- TEG machine – clotting cartridges
- Someone to draw blood & run sample
- In clinic!



THANK YOU