


**How To Do Bypass Surgery To Heavily  
Non-Compressible Calcified Target Arteries**




*Enrico Ascher, MD  
Frank J. Veith, MD*


*New York University & The  
Vascular Institute of New York®*

*No conflict of interest*

**The "Nightmare" of Limb Salvage Surgeons:  
Rock-like, pipe-like, heavy and  
circumferentially calcified arteries**




**Duplex mapping: select the least calcified segment**



Lower-extremity Revascularisation Without Preoperative Contrast  
Arteriography in 186 Cases: Lesions Located with Duplex Ultrasound  
Arterial Mapping

E. Mazzanti, E. Ascher, A. Sgambato, V. Corbiac, W. Yorkston and G. Ballo-Gentile

**Strategies to control bleeding during  
bypass operations**



Matas, 1888  
Esmarch bandage  
Calf pressure  
Popularized by Victor Bernhard

*Advantages:*

1. Bloodless operative field
2. Avoids clamp trauma


*Disadvantages:*

1. Not effective in severe cases
2. Possible muscle damage


**Strategies to control bleeding during  
bypass operations**

*Intraluminal devices*


**Silastic tube**



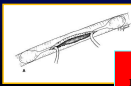
**Flo-rester**




**Spinelli**



**Olive tip  
metal occluder**

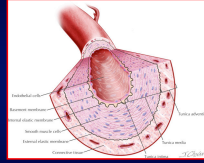




*Strategies to control bleeding and allow suturing*

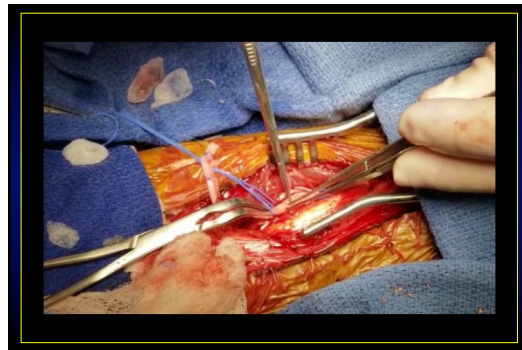
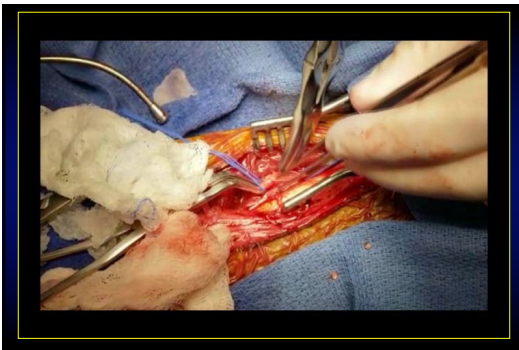
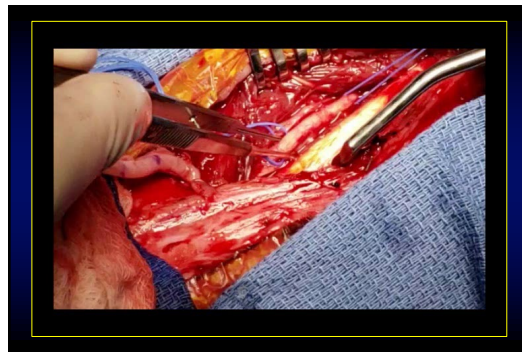
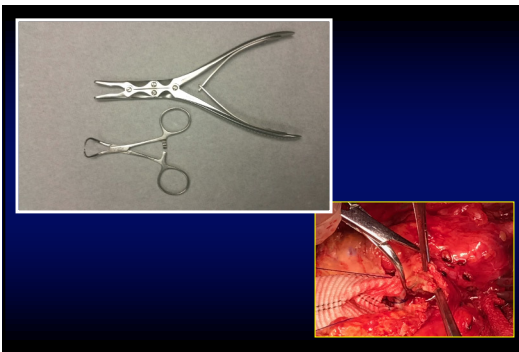
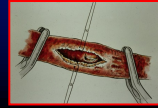
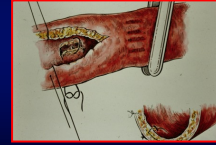
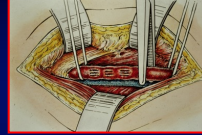
*A simple technique for:*

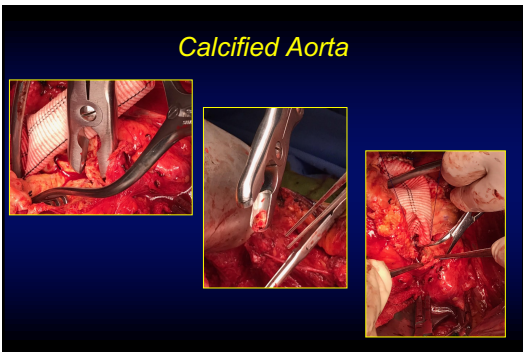
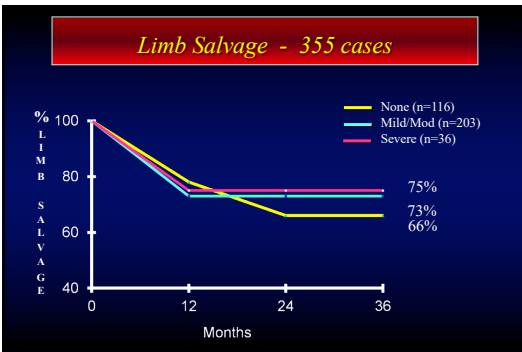
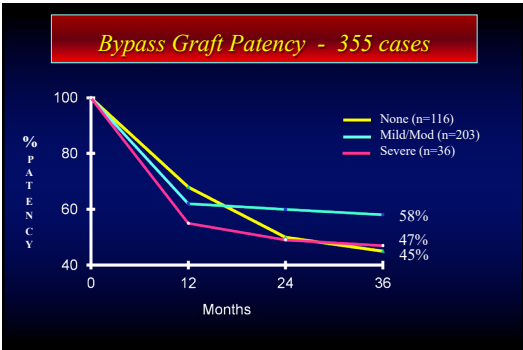
- 1. Bleeding control*
- 2. Incision*
- 3. Suture placement*



*these patients are often deemed "unreconstructable" ...*

*Fracture Technique*





*Thank you*